

Unit T-30 - Seapointe Terrace

T-30 - 7500 Sunshine Skyway Ln S, St Petersburg, FL, Pinellas 33711

Unit Information

MLS Number: U8232818
 Status: ACTIVE
 Size: 890 Sq ft.
 Bedrooms: 1
 Full Bathrooms: 2
 Half Bathrooms: 0
 Parking Spaces:
 View: Water
 List Price: \$328,500
 List PPSF: \$369
 Valuated Price: \$231,000
 Valuated PPSF: \$260

The above valuated price is a baseline figure that does not take into account any specific renovation, upgrade, split, merge, or deterioration of the unit.

Building Information

Number of units: 108
 Number of active listings for rent: 0
 Number of active listings for sale: 18
 Building inventory for sale: 16%
 Number of sales over the last 12 months: 10
 Number of sales over the last 6 months: 5
 Number of sales over the last 3 months: 3

Building Association Information

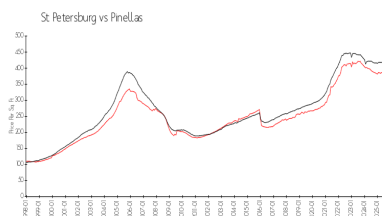
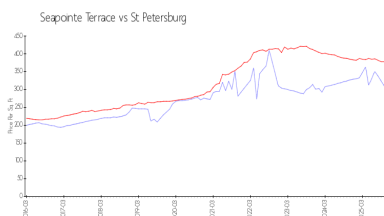
Seapointe Terrace
 Address: 7520 Sunshine Skyway Ln S,
 St. Petersburg, FL 33711

<https://>

Recent Sales

Unit #	Size	Closing Date	Sale Price	PPSF
121	1,280 sq ft	Nov 2025	\$404,000	\$316
210	1,280 sq ft	Nov 2025	\$389,500	\$304
221	1,280 sq ft	Oct 2025	\$495,000	\$387
109	1,280 sq ft	Jul 2025	\$470,000	\$367
113	1,280 sq ft	Jun 2025	\$427,500	\$334
T6	1,210 sq ft	Jun 2025	\$237,000	\$196

Market Information



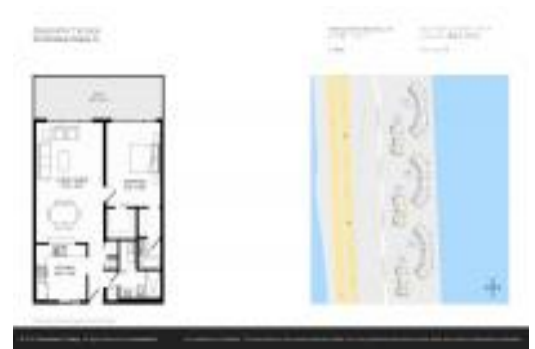
Seapointe Terrace: \$294/sq. ft.
 St Petersburg: \$376/sq. ft.

St Petersburg: \$376/sq. ft.
 Pinellas: \$387/sq. ft.

Inventory for Sale

Seapointe Terrace: 17%
 St Petersburg: 9%
 Pinellas: 8%

Avg. Time to Close Over Last 12 Months



Seapointe Terrace	15 days
St Petersburg	95 days
Pinellas	100 days