

# Unit 7105 - Shores of Long Bayou

7105 - 6205-6551 Shoreline Dr, St Petersburg, FL, Pinellas 33708

## Unit Information

MLS Number:	U8235670
Status:	ACTIVE
Size:	1,195 Sq ft.
Bedrooms:	2
Full Bathrooms:	2
Half Bathrooms:	0
Parking Spaces:	
View:	Trees/Woods, Water
List Price:	\$299,000
List PPSF:	\$250
Valuated Price:	\$260,000
Valuated PPSF:	\$218

*The above valuated price is a baseline figure that does not take into account any specific renovation, upgrade, split, merge, or deterioration of the unit.*

## Building Information

Number of units:	340
Number of active listings for rent:	0
Number of active listings for sale:	44
Building inventory for sale:	12%
Number of sales over the last 12 months:	17
Number of sales over the last 6 months:	9
Number of sales over the last 3 months:	2

## Building Association Information

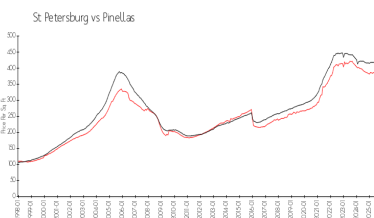
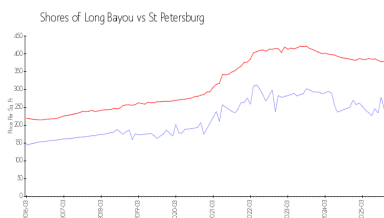
Shores of Long Bayou  
Address: 6301 Shoreline Dr, St. Petersburg, FL 33708  
Phone: +1 727-395-9497

<https://www.theshoresoflongbayou.org/>

## Recent Sales

Unit #	Size	Closing Date	Sale Price	PPSF
10102	1,195 sq ft	Oct 2025	\$290,000	\$243
14B	1,450 sq ft	Sep 2025	\$429,000	\$296
8105	1,205 sq ft	Sep 2025	\$299,000	\$248
1204	1,595 sq ft	Aug 2025	\$419,000	\$263
14F	1,450 sq ft	Aug 2025	\$295,000	\$203

## Market Information

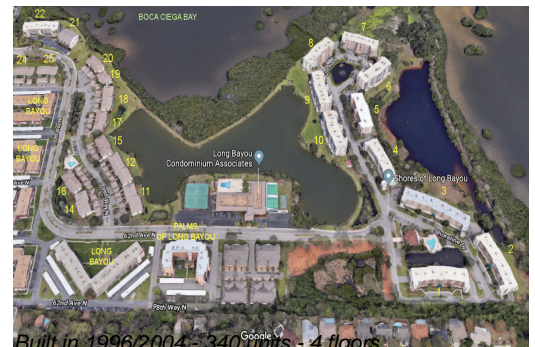


Shores of Long Bayou:	\$220/sq. ft.	St Petersburg:	\$376/sq. ft.
St Petersburg:	\$376/sq. ft.	Pinellas:	\$387/sq. ft.

## Inventory for Sale

Shores of Long Bayou	13%
St Petersburg	9%
Pinellas	8%

## Avg. Time to Close Over Last 12 Months



Shores of Long Bayou  
St Petersburg  
Pinellas

145 days  
95 days  
100 days